

# CLIPPER COVE

## Approved Locking Mailboxes



Available from [mailoss.com](http://mailoss.com) or  
[amazon.com](http://amazon.com)

### Mail Boss Mail Manager

The Mail Manager by Mail Boss is a USPS-approved locking mailbox for residential use that protects against theft and vandalism. It accepts mail bundles and small packages, features anti-fishing design, heavy-gauge galvanized steel construction, an anti-pry latch, and a high-security lock with laser-cut keys.

### Product Specifications

Dimensions: 10.75"W x 11.25"H x 21"D

Weight: 22 lbs

Model: 7506

Color: Black



[architecturalmailboxes.com](http://architecturalmailboxes.com)  
Available from Amazon & Home Depot



### Curbside MailSafe

Made from durable polypropylene plastic and galvanized steel, it resists rust and UV damage while securely holding envelopes, magazines, and small packages. It features a concealed locking compartment, easy-access door with magnetic latch, internal mail clip, and a cam lock with two keys for added protection.

### Product Specifications

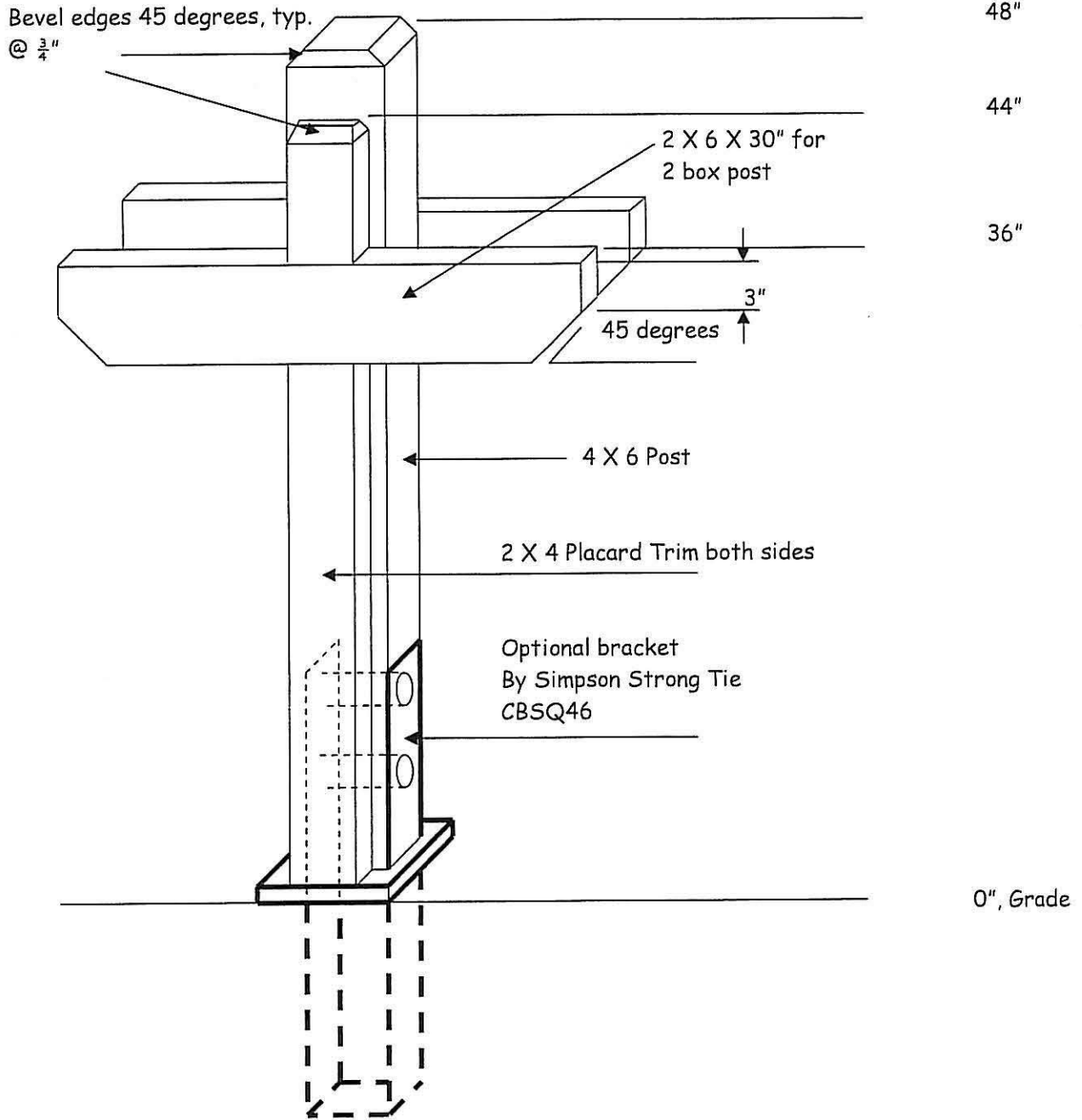
Dimensions: 13" W x 9.5" H x 21.6" D

Weight: 10 lbs

Model: RSKB00AM

Color: Black

## Mailbox Post Construction Detail Sheet



Material to be rough, Redwood.  
 Fasteners to be Hot Dipped Galvanized  
 Optional Bracket to be painted  
 Rustoleum, Flat Black