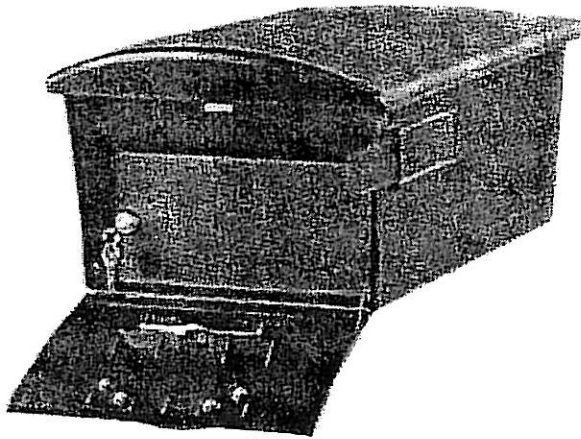




Curbside MailSafe Locking Mailbox



AVAILABLE AT HOME DEPOT

STANDARD SIZE & DIMENSIONS

Pinnacle
10.75" W x 11"H x 23" D
Pinnacle Plus
11"W x 11"H x 23" D

BAY COLONY – July 15, 2004

This mailbox is made of high qual polypropylene/galvanized steel for stre durability. It features full service for inco outgoing mail with a extra wide mail sl exceeds postal regulations. A slide out alerts mail carrier of outgoing mail and a locking access door provides easy mail r outgoing mail clip is located on the insid door and easily accessabe. Designed f mounting only on pedestal mount post it mounting plate (not included, see notes installation and will fit most standard mou The classic look of this mailbox will compl home or driveway, and the extra security those who want to keep their correspond and private.

Ship weight (lbs.): 14.00

Color: Black

Made of: Polypropylene, Galvanized Steel

Leaves warehouse in: Next Business Day (click for shippin

Hardware included: No hardware included.

Brand or origin: Solar Group

Item Number/Name: SGM-4 - Curbside MailSafe Locki

Price: \$ 90.00

Add to Cart

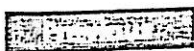
Notes (if any):

USPS approved, Post with mounting plate sold se Includes 2 keys.

Mounting plates are normally supplied with post w purchased, if you are using an existing post and n mounting plate, your local hardware store should complete installation.

Search

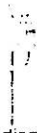
Customers who liked this item also enjoyed these...



The Madison Post
Single - Black



The Madison Post
Single - Bronze



The Madison Post
Single - White



The Madison Post
Double - Black



The Madison Post
Double - Bronze



The Madison Post
Double - White

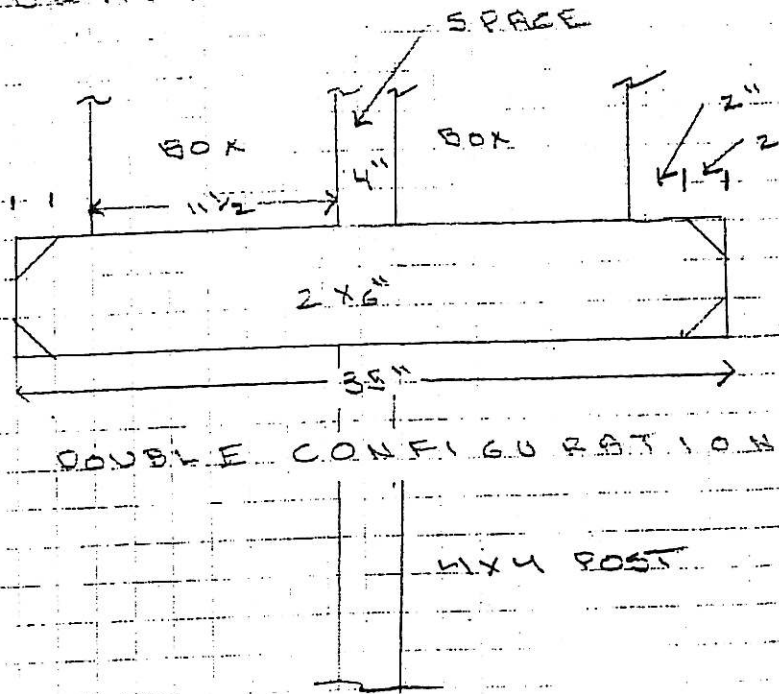
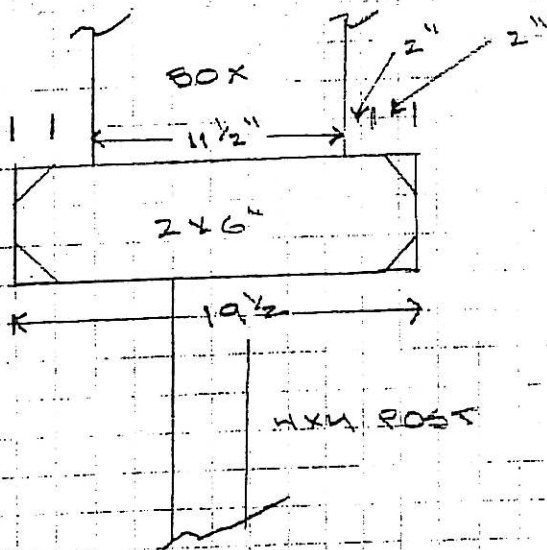


Regal Lion Head
Door Knocker -
Polished Brass

MAIL BOX POST INSTALLATIONS

TO BE USED FOR SOLAR LOCKING MAIL BOXES

SINGLE BOX CONFIGURATION



TRIPLE CONFIGURATION

